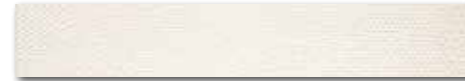
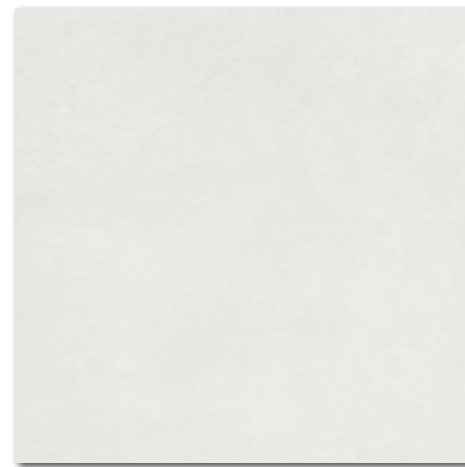


WADV4719
 ○ 80 / m²
 mat | matt

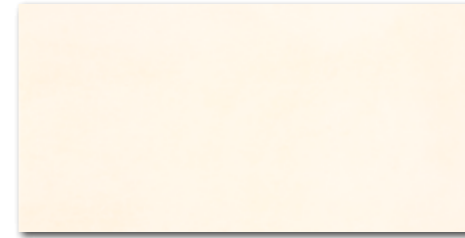


WLAS4719 60x9,5
 ○ 68 / ks
 mat | matt
 bילו-běžová / white-beige / biatobeżowa / бело-бежевый
 fehér-bézs / blanco-amarillento



DAR63722
 PEI 5 ○ 82 / m²
 mat | matt

bílá / white / biała / белый / fehér / blanco



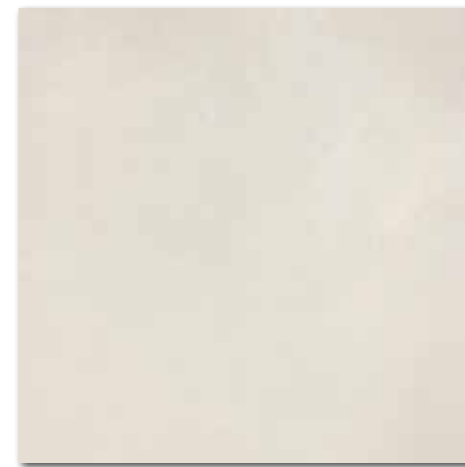
WADV4720
 ○ 80 / m²
 mat | matt



WARV4720
 ○ 84 / m²
 mat | matt
 slonová kost / ivory / kość słoniowa
 слонобая кость / elefántcsont / marfil



WLASN100
 ○ 60 / ks
 mat/lesk | matt/glossy
 měděná / cupreous / miedz
 медь / réz / cobre



DAR63720
 PEI 5 ○ 82 / m²
 mat | matt

slonová kost / ivory / kość słoniowa / слонобая кость / elefántcsont / marfil

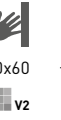


WADV4721
 ○ 80 / m²
 mat | matt



DAR63721
 PEI 4 ○ 82 / m²
 mat | matt

hnědo-šedá / brown-grey / brązowoszara
 коричневый-серый szürke-barna / gris-marrón



30x60
 v2

60x2,3



60x60



R9



A



v2



výrobek / product



EN



ks/m²



m²



m²

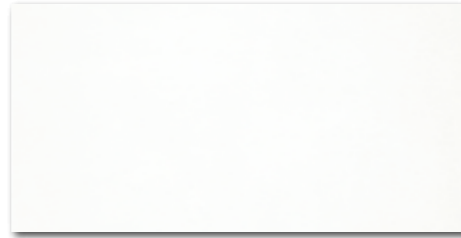


kg

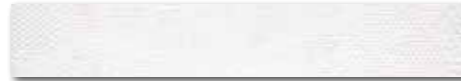


brutto kg

výrobek / product	cm	mm	EN	ks/m ²	m ²	m ²	kg	brutto kg			
obkládačka / wall tile	30x60	298x598x10	EN 14411:2016, annex L BIII GL	6	5,56	1,08	40	43,20	20,0	18,5	825
listela / listel	60x2,3	598x23x10	EN 14411:2016, annex L BIII GL	6	72,5	0,08	-	-	1,7	20,6	-
listela / listel	60x9,5	598x95x10	EN 14411:2016, annex L BIII GL	6	17,5	0,34	-	-	6,7	18,7	-
dlaždice / floor tile	60x60	598x598x10	EN 14411:2016, annex G BIIa GL	3	2,8	1,08	32	34,56	24,9	23,0	820

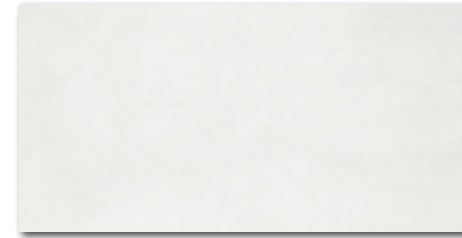


WADV4722
 ○ 80 / m²
 mat | matt



WLAS4722 60x9,5
 ○ 68 / ks
 mat | matt

bílo-šedá / white-grey / biato-szara
 бело-серый / fehér-szürke / blanco-gris



WADV4723
 ○ 80 / m²
 mat | matt



WARV4723
 ○ 84 / m²
 mat | matt
 světle šedá / light grey / jasnoszara / светло-серый
 világosszürke / gris claro



WLASN101
 ○ 60 / ks
 mat/lesk | matt/glossy
 platinová / platinum / platynowa
 платиновый / platina / platino



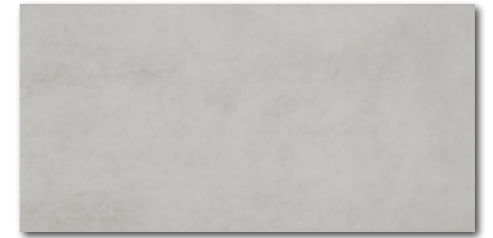
DAR63722
 PEI 5 ○ 82 / m²
 mat | matt

bílá / white / biata / белый / fehér / blanco



DAR63723
 PEI 4 ○ 82 / m²
 mat | matt

světle šedá / light grey / jasnoszara / светло-серый
 világosszürke / gris claro



WADV4724
 ○ 80 / m²
 mat | matt



DAR63724
 PEI 4 ○ 82 / m²
 mat | matt

tmavě šedá / dark grey / ciemnoszara / темно-серый
 sötétszürke / gris oscuro



60x2,3



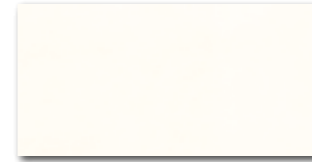
výrobek / product



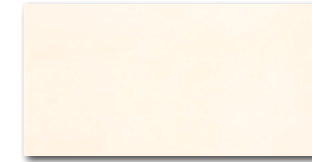
EN



obkladacia / wall tile	30x60	298x598x10	EN 14411:2016, annex L BIII GL	6	5,56	1,08	40	43,20	20,0	18,5	825
listela / listel	60x2,3	598x23x10	EN 14411:2016, annex L BIII GL	6	72,5	0,08	-	-	1,7	20,6	-
listela / listel	60x9,5	598x95x10	EN 14411:2016, annex L BIII GL	6	17,5	0,34	-	-	6,7	18,7	-
dlaždice / floor tile	60x60	598x598x10	EN 14411:2016, annex G BIIa GL	3	2,8	1,08	32	34,56	24,9	23,0	820



WADMB719
○ 72 / m²
mat | matt



WADMB720
○ 72 / m²
mat | matt



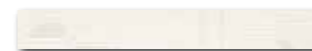
WADMB721
○ 72 / m²
mat | matt

bílo-běžová / white-beige / białobezowa
бело-бежевый / fehér-bézs / blanco-amarillento



WADMB220*
○ 76 / m²
mat | matt | **V4**

slonová kost / ivory / kość stoniowa
слоновая кость / elefántcsont / marfil



WLAMH719
○ 52 / ks
mat/lesk | matt/glossy



WLRMG719
○ 52 / ks
mat | matt



WLRMG720
○ 52 / ks
mat | matt



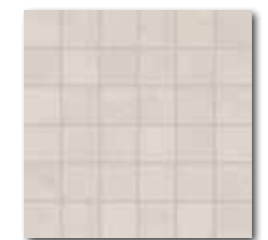
WLRMG721
○ 52 / ks
mat | matt



WDM05719 (SET)
○ 66 / set
mat | matt

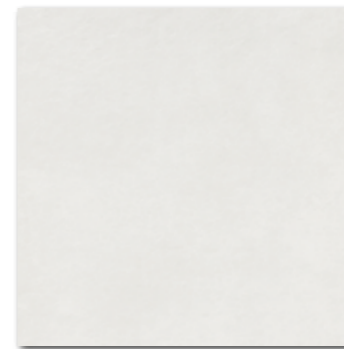


WDM05720 (SET)
○ 66 / set
mat | matt



WDM05721 (SET)
○ 66 / set
mat | matt

bílo-běžová / white-beige / białobezowa
бело-бежевый / fehér-bézs / blanco-amarillento



DAR44722
PEI 5 ○ 74 / m²
mat | matt



DAR44720
PEI 5 ○ 74 / m²
mat | matt



DAR44721
PEI 4 ○ 74 / m²
mat | matt

bílá / white / biata / белый / fehér / blanco

slonová kost / ivory / kość stoniowa
слоновая кость / elefántcsont / marfil

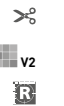
hnědo-šedá / brown-grey / brązowoszara
коричневый-серый / szürke-barna / gris-marrón

*Balení výrobku obsahuje nahodilý mix zobrazených designů. | The products are deliberately mixed in packing to include a random selection of designs.

40x4,8

40x2

30x30



45x45



výrobek / product



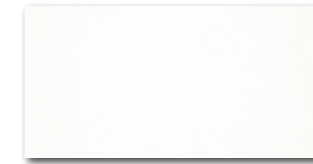
EN



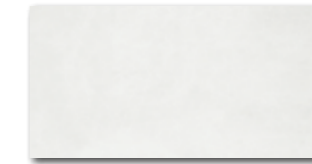
výrobek / product	20x40	198x398x7	EN 14411:2016, annex L BIII GL	20	12,5	1,60	48	76,80	20,6	12,9	1 016
obkládačka / wall tile	40x4,8	398x48x7	EN 14411:2016, annex L BIII GL	7	52,1	0,13	-	-	1,8	13,6	-
listela / listel	40x2	398x20	STO No. 030 - 054498	12	125	0,09	-	-	1,7	18,9	-
reliefní listela / relief listel	5x5	48x48x7	STO No. 030 - 049913	3	11	0,27	-	-	3,5	12,9	-
mozaika set 30x30 cm / mosaic sheet 30x30 cm	45x45	445x445x10	EN 14411:2016, annex G BIIa GL	6	5	1,21	26	31,46	25,0	20,7	677



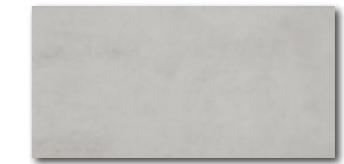
výrobek / product	cm	mm	EN	ks/m ²	m ²	m ²	m ²	kg	kg/m ²	brutto kg
obkládačka / wall tile	20x40	198x398x7	EN 14411:2016, annex L BIII GL	20	12,5	1,60	48	76,80	20,6	1 016
listela / listel	40x4,8	398x48x7	EN 14411:2016, annex L BIII GL	7	52,1	0,13	-	-	1,8	13,6
reliéfní listela / relief listel	40x2	398x20	STO No. 030 - 054498	12	125	0,09	-	-	1,7	18,9
mozaika set 30x30 cm / mosaic sheet 30x30 cm	5x5	48x48x7	STO No. 030 - 049913	3	11	0,27	-	-	3,5	12,9
dlaždice / floor tile	45x45	445x445x10	EN 14411:2016, annex G BIIa GL	6	5	1,21	26	31,46	25,0	677



WADMB722
○ 72 / m²
mat | matt



WADMB723
○ 72 / m²
mat | matt



WADMB724
○ 72 / m²
mat | matt

bílo-šedá / white-grey / biato-szara
бело-серый / fehér-szürke / blanco-gris



WADMB223*
○ 76 / m²
mat | matt | **V4**

světle šedá / light grey / jasnoszara / светло-серый
világosszürke / gris claro



WLRMG723
○ 52 / ks
mat/lesk | matt/glossy



WLRMG724
○ 52 / ks
mat | matt



WLAMH722
○ 52 / ks
mat/lesk | matt/glossy



WLRMG722
○ 52 / ks
mat | matt



WLRMG723
○ 52 / ks
mat | matt



WLRMG724
○ 52 / ks
mat | matt



WDM05722 (SET)
○ 66 / set
mat | matt



WDM05723 (SET)
○ 66 / set
mat | matt



WDM05724 (SET)
○ 66 / set
mat | matt

bílo-šedá / white-grey / biato-szara
бело-серый / fehér-szürke / blanco-gris



DAR44722
PEI 5 ○ 74 / m²
mat | matt

bílá / white / biata / белый / fehér / blanco



DAR44723
PEI 4 ○ 74 / m²
mat | matt

světle šedá / light grey / jasnoszara / светло-серый
világosszürke / gris claro



DAR44724
PEI 4 ○ 74 / m²
mat | matt

tmavě šedá / dark grey / ciemnoszara / темно-серый
sötétszürke / gris oscuro

*Balení výrobku obsahuje nahodilý mix zobrazených designů. | The products are deliberately mixed in packing to include a random selection of designs.



20x40
v2

40x4,8

40x2

30x30



45x45

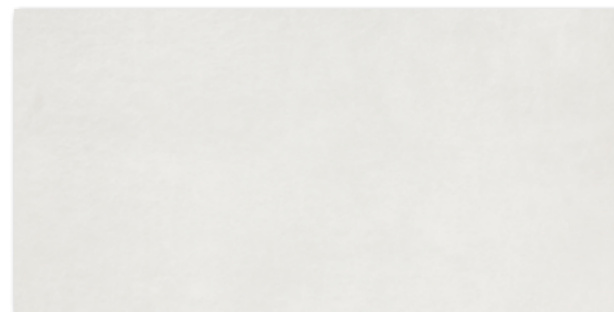


R





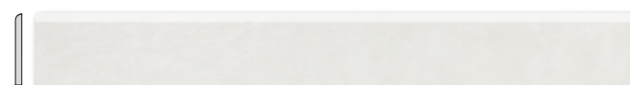
DAR81722
PEI 5 \bigcirc 94 / m²
mat | matt



DAR84722
PEI 5 \bigcirc 94 / m²
mat | matt



DCP84722
PEI 5 \bigcirc 78 / ks
mat | matt



DSA89722
 \bigcirc 72 / ks
mat | matt

bílá / white / biata / белый / fehér / blanco



DAR81720
PEI 5 \bigcirc 94 / m²
mat | matt



DAR84720
PEI 5 \bigcirc 94 / m²
mat | matt



DCP84720
PEI 5 \bigcirc 78 / ks
mat | matt



DSA89720
 \bigcirc 72 / ks
mat | matt

slonová kost / ivory / kość sloniowa / слоновая кость
elefántcsont / marfil



DAR81721
PEI 4 \bigcirc 94 / m²
mat | matt



DAR84721
PEI 4 \bigcirc 94 / m²
mat | matt

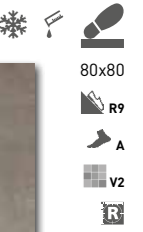


DCP84721
PEI 4 \bigcirc 78 / ks
mat | matt



DSA89721
 \bigcirc 72 / ks
mat | matt

hnědo-šedá / brown-grey / brązowoszara / коричневый-серый
szürke-barna / gris-marrón



80x80

R9

A

V2

R

40x80

R9

A

V2

R

40x80

R9

A

V2

R

80x9,5

R

výrobek / product



EN



ks/m²



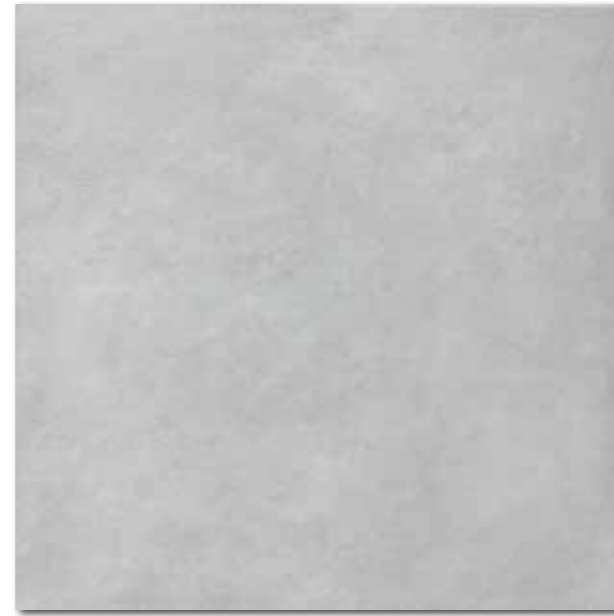
kg/m²



brutto kg

výrobek / product	cm	mm	EN	mm	ks/m ²	m ²	kg	kg/m ²	brutto kg		
dlaždice / floor tile	80x80	798x798x10	EN 14411:2016, annex G Bia GL	2	1,6	1,28	40	51,2	28,0	21,9	1 147
dlaždice / floor tile	40x80	398x798x10	EN 14411:2016, annex G Bia GL	4	3,1	1,28	48	61,44	28,0	21,9	1 371
schodovka / step tile	40x80	398x798x10	STO č. 030 - 049916	2	3,1	0,64	-	-	14,1	21,9	-
sokl / skirting plinth	80x9,5	798x95x10	STO č. 030 - 049916	10	13,2	0,76	-	-	16,7	21,9	-

Doporučené skladby formátů viz str. 325. | Recommended combinations of modular sizes see page 325. | Zalecane ułożenie modułowych formatów na stronie 325.
Рекомендуемый состав модульных форматов, см. стр. 325. | Composiciones de formatos recomendadas - vea la página n° 325.



DAR81723
PEI 4 ○ 94 / m²
mat | matt



DAR84723
PEI 4 ○ 94 / m²
mat | matt



DCP84723
PEI 4 ○ 78 / ks
mat | matt



DSA89723
○ 72 / ks
mat | matt

světle šedá / light grey / jasnoszara
светло-серый / világosszürke / gris claro



DAR81724
PEI 4 ○ 94 / m²
mat | matt



DAR84724
PEI 4 ○ 94 / m²
mat | matt

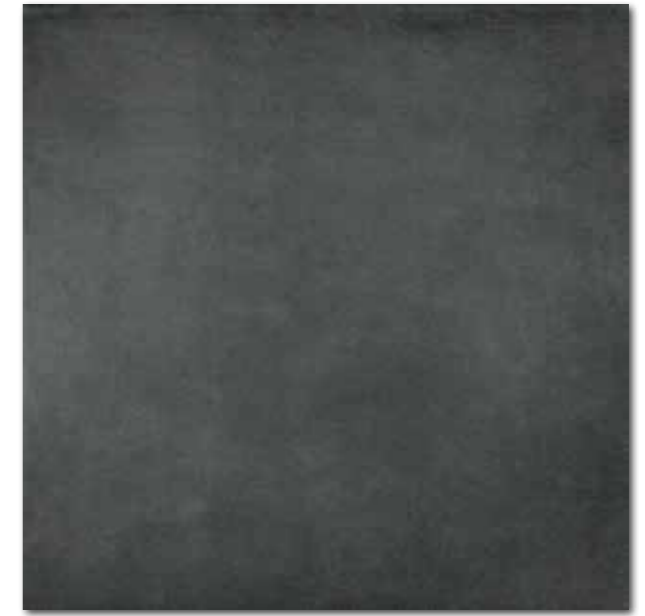


DCP84724
PEI 4 ○ 78 / ks
mat | matt



DSA89724
○ 72 / ks
mat | matt

tmavě šedá / dark grey / ciemnoszara
темно-серый / sötétszürke / gris oscuro



DAR81725
PEI 4 ○ 94 / m²
mat | matt



DAR84725
PEI 4 ○ 94 / m²
mat | matt

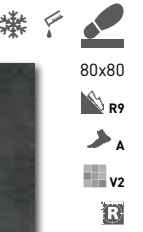


DCP84725
PEI 4 ○ 78 / ks
mat | matt



DSA89725
○ 72 / ks
mat | matt

černá / black / szarna / черный / fekete / negro



80x80

R9

A

V2

R

40x80

R9

A

V2

R

40x80

R9

A

V2

R

80x9,5

R

výrobek / product

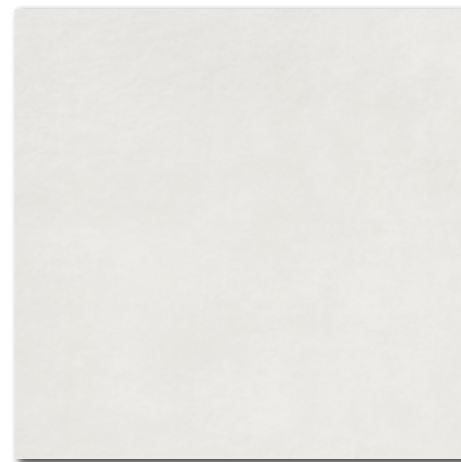


EN

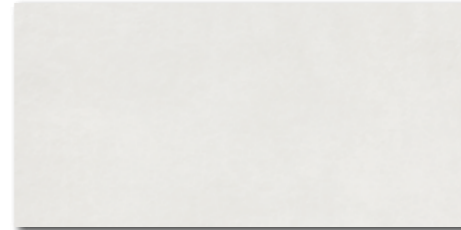


výrobek / product	cm	mm	EN	mm	ks/m ²	m ²	m ²	m ²	kg	kg/m ²	brutto kg
dlaždice / floor tile	80x80	798x798x10	EN 14411:2016, annex G B1a GL	2	1,6	1,28	40	51,2	28,0	21,9	1 147
dlaždice / floor tile	40x80	398x798x10	EN 14411:2016, annex G B1a GL	4	3,1	1,28	48	61,44	28,0	21,9	1 371
schodovka / step tile	40x80	398x798x10	STO č. 030 - 049916	2	3,1	0,64	-	-	14,1	21,9	-
sokl / skirting plinth	80x9,5	798x95x10	STO č. 030 - 049916	10	13,2	0,76	-	-	16,7	21,9	-

Doporučené skladby formátů viz str. 325. | Recommended combinations of modular sizes see page 325. | Zalecane ułożenie modułowych formatów na stronie 325.
Рекомендуемый состав модульных форматов, см. стр. 325. | Composiciones de formatos recomendadas - vea la página n° 325.



DAR63722
PEI 5 \odot 82 / m²
mat | matt



DARSE722
PEI 5 \odot 78 / m²
mat | matt
bílá / white / biata / белый / fehér / blanco



DAR63723
PEI 4 \odot 82 / m²
mat | matt



DARSE723
PEI 4 \odot 78 / m²
mat | matt
světle šedá / light grey / jasnoszara
светло-серый / világosszürke / gris claro



DAR63720
PEI 5 \odot 82 / m²
mat | matt



DARSE720
PEI 5 \odot 78 / m²
mat | matt
slonová kost / ivory / kość słoniowa / слонобая кость
elefántcsont / marfil



DAR63724
PEI 4 \odot 82 / m²
mat | matt



DARSE724
PEI 4 \odot 78 / m²
mat | matt
tmavě šedá / dark grey / ciemnoszara
темно-серый / sötétszürke / gris oscuro



DAR63721
PEI 4 \odot 82 / m²
mat | matt



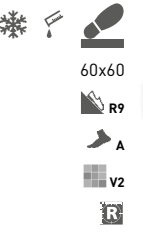
DARSE721
PEI 4 \odot 78 / m²
mat | matt
hnědo-šedá / brown-grey / brązowoszara / коричневый-серый
szürke-barna / gris-marrón



DAR63725
PEI 4 \odot 82 / m²
mat | matt



DARSE725
PEI 4 \odot 78 / m²
mat | matt
černá / black / czarna / черный / fekete / negro



news



news



news



news

výrobek / product



EN



dlaždice / floor tile	60x60	598x598x10	EN 14411:2016, annex G Bla GL	3	2,8	1,08	32	34,56	24,9	23,0	820
dlaždice / floor tile	30x60	298x598x10	EN 14411:2016, annex G Bla GL	6	5,6	1,08	40	43,20	23,2	21,5	954

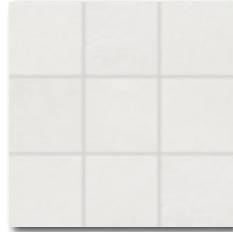


30x30
10x10
20x20
30x30
45x45

v2



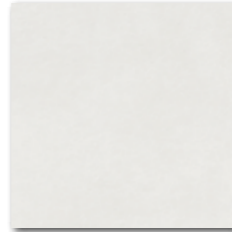
DDM06722 (SET)
PEI 5 \odot 72 / set
mat | matt | R10 | B | > | A



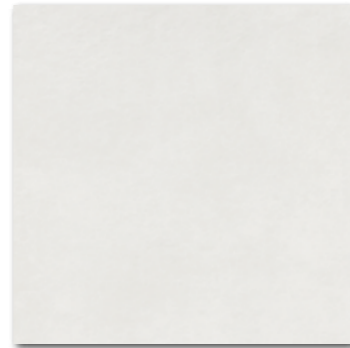
DAR12722
PEI 5 \odot 90 / m²
mat | matt | R10 | B | > | A



DAR26722
PEI 5 \odot 86 / m²
mat | matt | R9 | A | A



DAR34722
PEI 5 \odot 72 / m²
mat | matt | R9 | A | A



DAR44722
PEI 5 \odot 74 / m²
mat | matt | R9 | A | A

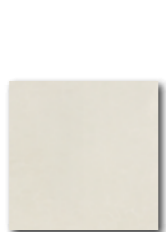
bílá / white / biala / белый / fehér / blanco



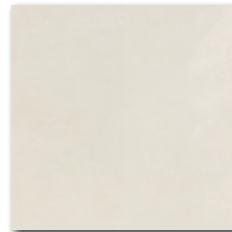
DDM06720 (SET)
PEI 5 \odot 72 / set
mat | matt | R10 | B | > | A



DAR12720
PEI 5 \odot 90 / m²
mat | matt | R10 | B | > | A



DAR26720
PEI 5 \odot 86 / m²
mat | matt | R9 | A | A



DAR34720
PEI 5 \odot 72 / m²
mat | matt | R9 | A | A



DAR44720
PEI 5 \odot 74 / m²
mat | matt | R9 | A | A

stonová kost / ivory / kość stoniowa / слоновая кость
elefántcsont / marfil



DDM06721 (SET)
PEI 4 \odot 72 / set
mat | matt | R10 | B | > | A



DAR12721
PEI 4 \odot 90 / m²
mat | matt | R10 | B | > | A



DAR26721
PEI 4 \odot 86 / m²
mat | matt | R9 | A | A

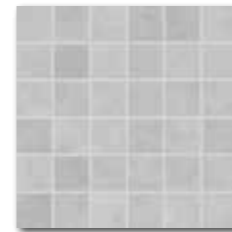


DAR34721
PEI 4 \odot 72 / m²
mat | matt | R9 | A | A



DAR44721
PEI 4 \odot 74 / m²
mat | matt | R9 | A | A

hnědo-šedá / brown-grey / brązowoszara / коричневый-серый
szürke-barna / gris-marrón



DDM06723 (SET)
PEI 4 \odot 72 / set
mat | matt | R10 | B | > | A



DAR12723
PEI 4 \odot 90 / m²
mat | matt | R10 | B | > | A



DAR26723
PEI 4 \odot 86 / m²
mat | matt | R9 | A | A

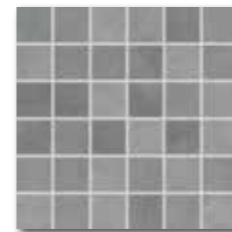


DAR34723
PEI 4 \odot 72 / m²
mat | matt | R9 | A | A



DAR44723
PEI 4 \odot 74 / m²
mat | matt | R9 | A | A

světle šedá / light grey / jasnoszara
светло-серый / világosszürke / gris claro



DDM06724 (SET)
PEI 4 \odot 72 / set
mat | matt | R10 | B | > | A



DAR12724
PEI 4 \odot 90 / m²
mat | matt | R10 | B | > | A



DAR26724
PEI 4 \odot 86 / m²
mat | matt | R9 | A | A

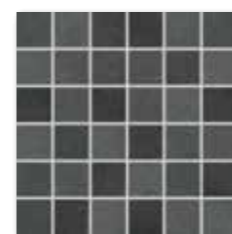


DAR34724
PEI 4 \odot 72 / m²
mat | matt | R9 | A | A

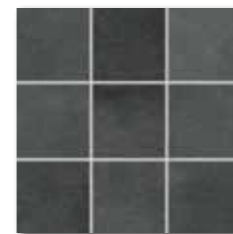


DAR44724
PEI 4 \odot 74 / m²
mat | matt | R9 | A | A

tmavě šedá / dark grey / ciemnoszara
темно-серый / sötétszürke / gris oscuro



DDM06725 (SET)
PEI 4 \odot 72 / set
mat | matt | R10 | B | > | A



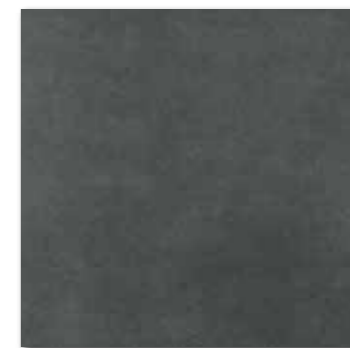
DAR12725
PEI 4 \odot 90 / m²
mat | matt | R10 | B | > | A



DAR26725
PEI 4 \odot 86 / m²
mat | matt | R9 | A | A



DAR34725
PEI 4 \odot 72 / m²
mat | matt | R9 | A | A



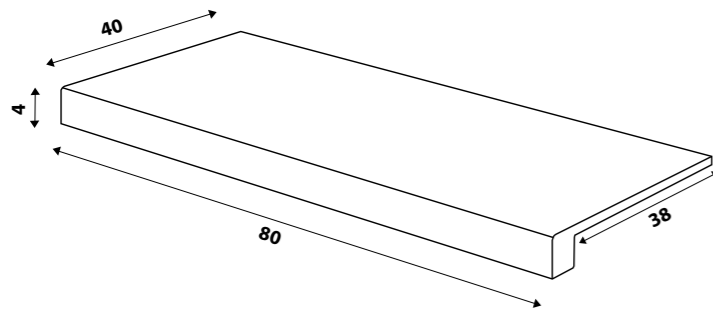
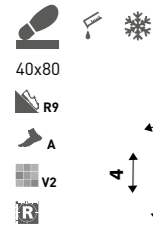
DAR44725
PEI 4 \odot 74 / m²
mat | matt | R9 | A | A

černá / black / czarna / черный / fekete / negro

výrobek / product



mozaika set 30x30 cm / mosaic sheet 30x30 cm	5x5	48x48x10	STO ě. 030 - 049913	3	11	0,27	-	-	5,9	21,9	-
dlaždice / floor tile	10x10	98x98x10	EN 14411:2016, annex G B1a GL	10	11	0,91	56	50,96	19,6	21,5	1 121
dlaždice / floor tile	20x20	198x198x10	EN 14411:2016, annex G B1a GL	23	25	0,92	57	52,44	21,2	23,0	1 232
dlaždice / floor tile	30x30	298x298x8	EN 14411:2016, annex G B1a GL	13	11	1,18	48	56,64	21,0	17,8	1 034
dlaždice / floor tile	45x45	445x445x10	EN 14411:2016, annex G B1a GL	6	5	1,21	26	31,46	25,0	20,7	677



DCF84720* slonová kost / ivory / kość słoniowa / слоно́вая ко́сть / elefántcsont / marfil
 DCF84721* hnědo-šedá / brown-grey / brązowoszara / коричневый-серый / szürke-barna / gris-marrón
 DCF84722* bílá / white / biata / белый / fehér / blanco
 DCF84723* světle šedá / light grey / jasnoszara / светло-серый / világosszürke / gris claro
 DCF84724* tmavě šedá / dark grey / ciemnoszara / темно-серый / sötétszürke / gris oscuro
 DCF84725* černá / black / czarna / черный / fekete / negro
 PEI 4-5 ○ 108 / ks
 mat | matt

45x8,5



DSAPM722
 ○ 56 / ks
 mat | matt
 bílá / white / biata / белый / fehér / blanco



DSAPM721
 ○ 56 / ks
 mat | matt
 béžová / beige / beżowa / бежевый / bézs / beige



DSAPM724
 ○ 56 / ks
 mat | matt
 tmavě šedá / dark grey / ciemnoszara / темно-серый / sötétszürke / gris oscuro



DSAPM720
 ○ 56 / ks
 mat | matt
 slonová kost / ivory / kość słoniowa / слоно́вая ко́сть / elefántcsont / marfil



DSAPM723
 ○ 56 / ks
 mat | matt
 světle šedá / light grey / jasnoszara / светло-серый / világosszürke / gris claro



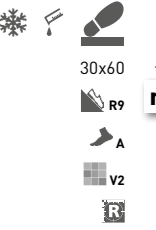
DSAPM725
 ○ 56 / ks
 mat | matt
 černá / black / czarna / черный / fekete / negro

výrobek / product



výrobek / product	cm	mm	EN	ks/m ²	m ²	m ³	kg	kg/m ²	brutto kg
schodová tvarovka / special step tile	40x80	398x798x10	STO č. 030 - 049916	2	-	-	-	-	-
sokl / skirting plinth	45x8,5	445x85x10	STO č. 030 - 049916	20	26,1	0,77	-	15,9	20,7
schodovka / step tile	30x60	298x598x10	STO č. 030 - 049916	6	5,6	1,08	40	23,2	21,5
sokl / skirting plinth	60x9,5	598x95x10	STO č. 030 - 049916	13	17,5	0,74	-	15,9	21,5

* Výroba na objednávku | Production by order | Produkcja na zamówienie | Производство под заказ | Gyártás rendelésre | Producción bajo demanda



news



DCPSE722
 PEI 5 ○ 72 / ks
 mat | matt
 bílá / white / biata / белый / fehér / blanco



DCPSE723
 PEI 4 ○ 72 / ks
 mat | matt
 světle šedá / light grey / jasnoszara / светло-серый / világosszürke / gris claro



DCPSE720
 PEI 5 ○ 72 / ks
 mat | matt
 slonová kost / ivory / kość słoniowa / слоно́вая ко́сть / elefántcsont / marfil



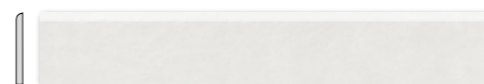
DCPSE724
 PEI 4 ○ 72 / ks
 mat | matt
 tmavě šedá / dark grey / ciemnoszara / темно-серый / sötétszürke / gris oscuro



DCPSE721
 PEI 4 ○ 72 / ks
 mat | matt
 hnědo-šedá / brown-grey / brązowoszara / коричневый-серый / szürke-barna / gris-marrón



DCPSE725
 PEI 4 ○ 72 / ks
 mat | matt
 černá / black / czarna / черный / fekete / negro



DSAS4722
 ○ 58 / ks
 mat | matt
 bílá / white / biata / белый / fehér / blanco



DSAS4723
 ○ 58 / ks
 mat | matt
 světle šedá / light grey / jasnoszara / светло-серый / világosszürke / gris claro



DSAS4720
 ○ 58 / ks
 mat | matt
 slonová kost / ivory / kość słoniowa / слоно́вая ко́сть / elefántcsont / marfil



DSAS4724
 ○ 58 / ks
 mat | matt
 tmavě šedá / dark grey / ciemnoszara / темно-серый / sötétszürke / gris oscuro



DSAS4721
 ○ 58 / ks
 mat | matt
 hnědo-šedá / brown-grey / brązowoszara / коричневый-серый / szürke-barna / gris-marrón



DSAS4725
 ○ 58 / ks
 mat | matt
 černá / black / czarna / черный / fekete / negro

60x9,5



news